



# SOUTH BEACH

## ROOM SERVICE

Served 12pm - 9pm. To order please call 5901  
£5 TRAY CHARGE APPLIES

### NIBBLES

Giant Chilli Corn £4

Nocellara Olives £5

Smoked Almonds £5

Focaccia Bread £6  
olive oil, balsamic

### STARTERS

Cauliflower and Truffle Soup £9 VE  
focaccia crisp

Burrata £11  
clementine, babaganoush, winter leaf

Crispy Pork £11  
piccalilli purée, pickles

Caesar £11 | £16  
cos lettuce, anchovy, brioche, buttermilk dressing  
ADD: Prawn £6 | Grilled Chicken £5

Salt Baked Heritage Beetroot £10 VE  
compressed pear, pecan,  
white balsamic, basil

Treacle Cured Salmon £13  
radish, rye crouton

### MAINS

Corn Fed Chicken Breast £22  
truffle mash, creamed leek, chicken butter sauce

Ale Battered Haddock and Chips £19  
peas, chunky tartar

Pumpkin and Sage Ravioli £20 VE  
truffle dressing, pine nuts

10oz Dry Aged Rib-Eye Steak £36  
fries, chimichurri

The Big NIC 'n' Fries £18  
Monterey Jack cheese, pickle

Salmon Fillet £24  
fries, lemon butter sauce

### SIDES

Tenderstem Broccoli £6

Truffle Mash £6

Fries £6

Mixed Leaf Salad £6  
sherry vinegar

Creamed Sweetcorn £6 VE  
pickled jalepeño, coriander

### LATE NIGHT

Served 9pm-6am

Sweet Potato, Chickpea and Spinach Curry £16

Beef Lasagne £18

### DESSERTS

Crème Brûlée £9  
pear and cinnamon texture

Cafe Latte Panna Cotta £9 VE  
almonds, cocoa foam

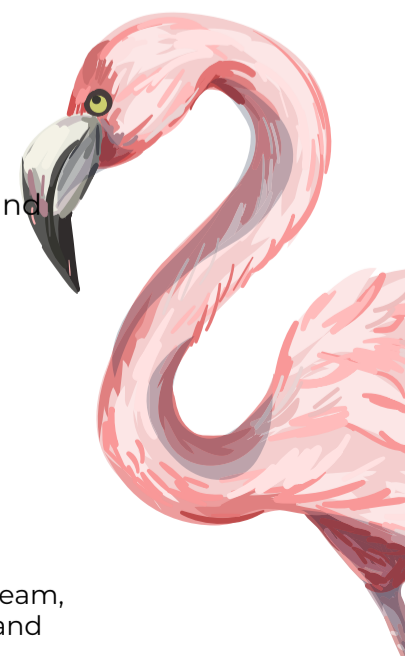
Selection of Ice Cream and  
Sorbet £6

Dark Chocolate  
and Orange Ganache £8  
milk chocolate cream,  
blood orange sorbet

Cheese  
1 for £5 | 2 for £9 | 3 for £13  
Isle of Wight Blue,  
Lincolnshire Poacher, Tunworth

VE - Vegan \*MP - Market Price (Subject to Availability)

If you are concerned about any food allergies, intolerances or dietary requirements, please ask a member of the team, who will be delighted to assist. All prices are inclusive of VAT. A discretionary 12.5% gratuity is added to the bill and divided between all staff, independently from the business.





SOUTH BEACH